



## Ysgol Glan Morfa

[www.ysgolglanmorfa.co.uk](http://www.ysgolglanmorfa.co.uk)

Annwyl Deuluoedd,

Dyma i chi ein cylchlythyr diweddaraf sy'n cynnwys diweddariadau o'n hysgol. Rydym yn awyddus i gasglu eich barn os ydych chi eisiau'r Ysgol gael cyfrif Instagram, dyma'r ddolen I'r holiadur.

[https://docs.google.com/forms/d/e/1FAIpQLSdcAowh3NOAu8X6Auj5Yoz5-lj7STyh5ggysD\\_IsM5JNksYhQ/viewform?usp=sharing](https://docs.google.com/forms/d/e/1FAIpQLSdcAowh3NOAu8X6Auj5Yoz5-lj7STyh5ggysD_IsM5JNksYhQ/viewform?usp=sharing)

Diolch I chi am eich cefnogaeth.

Dear Families,

Here is our latest newsletter which contains important updates from our school. We are looking into the possibility of setting up a school Instagram account, here is the survey here.

[https://docs.google.com/forms/d/e/1FAIpQLSdcAowh3NOAu8X6Auj5Yoz5-lj7STyh5ggysD\\_IsM5JNksYhQ/viewform?usp=sharing](https://docs.google.com/forms/d/e/1FAIpQLSdcAowh3NOAu8X6Auj5Yoz5-lj7STyh5ggysD_IsM5JNksYhQ/viewform?usp=sharing)

Thank you for your continued support.

Mr M Tomos

**Pennaeth / Headteacher**

### **Cyhoeddiadau Pwysig**

Rydym am sicrhau amgylchedd dysgu diogel a ffocysedig ar gyfer ein holl disgyblion. Sylwch ar y cyhoeddiadau pwysig canlynol:

- **Gemwaith, Colur, ac Ewinedd Ffug:** Gofynnwn yn garedig i disgyblion ymatal rhag gwisgo gemwaith, nwyddau colur ac ewinedd ffug i'r ysgol. Bydd unrhyw eitemau sy'n dod i'r ysgol yn cael eu cymryd a'u dychwelyd ar ddiwedd y dydd.
- **Cit Ymarfer Corff:** Dylai pob myfyriwr wisgo cit Addysg Gorfforol priodol, sy'n cynnwys top porffor plaen a thracwisg. Osgowch labeli ffasiynol i gynnal ymddangosiad unedig.
- **Prydlondeb:** Rydym wedi sylwi ar nifer bryderus o disgyblion yn cyrraedd yn hwyr. Mae amseroldeb yn hanfodol i disgyblion gymryd rhan mewn ymyriadau addysgol a lles pwysig. Gwerthfawrogwn eich cefnogaeth i sicrhau fod eich plentyn yn cyrraedd yr ysgol yn brydlon. Mae'r giât ochr yn cau am 08.40 a disgwylwn fod pob disgybl wedi cyrraedd cyn yr amser yma. Os byddwn yn sylwi ar batrwm o ran cyrraedd yn hwyr bydd Swyddog Presenoldeb y Clwstwr Mrs Vicky Oliver mewn cysylltiad.
- **Arian Ffrwythau Meithrin-BI 2.** Os hoffech i'ch plentyn dderbyn ffrwyth yn ddyddiol yr hanner tymor yma, gofynnwn yn garedig am daliad o £7 i'w dalu ar GroupEd. Mae croeso i'ch plentyn ddod a ffrwyth o adref i fwyta amser egwyl. Gofynnwn yn garedig i chi rhoi gwybod i [ysgolglanmorfa@cardiff.gov.uk](mailto:ysgolglanmorfa@cardiff.gov.uk) os nad yw'ch plentyn am dderbyn ffrwyth o'r ysgol yn ddyddiol. Diolch yn fawr.

### **Important Announcements**

We want to ensure a safe and focused learning environment for all our students. Please take note of the following important announcements:

- **Jewellery, Makeup, and False Nails:** We kindly ask that students refrain from wearing jewellery, makeup products, and false nails to school. Any items brought to school will be taken and returned at the end of the day.
- **PE Kit:** All students should wear appropriate PE kits, which include a plain purple top and tracksuit. Please avoid trendy labels to maintain a unified appearance.
- **Punctuality:** We have noticed a concerning number of students arriving late. Timeliness is essential for students to participate in important educational and wellbeing interventions. We appreciate your support in ensuring that your child arrives at school on time. The side gate closes at 08.40 and we expect all pupils to have arrived before this time. If we notice a pattern in late arrivals the Cluster's Attendance Officer Mrs Vicky Oliver will be in contact.
- **Fruit Payment - Nursery, Reception, Year 1 and 2.** If you would like your child to receive fruit daily this half term, we kindly ask for a payment of £7 to be paid on GroupEd. Your child is welcome to bring fruit from home to eat at break time. We kindly ask you to inform our main reception on [ysgolglanmorfa@cardiff.gov.uk](mailto:ysgolglanmorfa@cardiff.gov.uk) if your child does not want to receive fruit from the school daily. Thank you.



## Ysgol Glan Morfa

[www.ysgolglanmorfa.co.uk](http://www.ysgolglanmorfa.co.uk)

### Dathliadau o'r Wythnos

Rydym wrth ein bodd yn rhannu newyddion gwych! Perfformiodd ein tîm pêl-droed merched yn arbennig o dda yn y Primary Fives Cynradd a gynhaliwyd yn Ocean Park ddydd Mawrth. Roedd eu gwaith caled, eu gwaith tîm, a'u brwdfrydedd yn ganmoladwy, ac rydym yn falch o'u cyflawniadau. Llongyfarchiadau i'r tîm am gynrychioli ein hysgol gyda chymaint o falchder!

### Celebrations from the Week

We are thrilled to share some fantastic news! Our girls' football team performed exceptionally well in the Primary Fives held at Ocean Park on Tuesday. Their hard work, teamwork, and sportsmanship were commendable, and we are proud of their achievements. Congratulations to the team for representing our school with such pride!

### Cofiwch

Fel bob amser, rydym yma i gefnogi taith addysgol eich plentyn. Os oes gennych unrhyw gwestiynau neu bryderon, mae croeso i chi gysylltu â ni. Mae eich cyfranogiad yn hanfodol i lwyddiant eich plentyn, ac rydym yn gwerthfawrogi eich partneriaeth barhaus wrth feithrin amgylchedd dysgu cadarnhaol.

Diolch am eich cefnogaeth barhaus i wneud ein cymuned ysgol yn lle gwell i'n plant. Gyda'n Gilydd Fe Lwyddwn!

### Remember

As always, we are here to support your child's educational journey. If you have any questions or concerns, please do not hesitate to reach out to us. Your involvement is crucial to your child's success, and we appreciate your continued partnership in fostering a positive learning environment.

Thank you for your ongoing support in making our school community a better place for our children. Together We Will Succeed!

### Wythnos Nesaf – Atgof

- Dydd Llun – Dancefit
- Dydd Mercher – Clwb Eisteddfod
- Dydd Iau – Clwb Rygbi
- Dosbarth Elen - Sesiwn pBuzz Dosbarth (28.1.25)
- Dosbarth Arthur a Gwenhyfar-taith o amgylch yr ardal leol (29.1.25)
- Gweithdy F1 mewn Ysgolion – Blynnyddoedd 5 a 6 (31.1.25)

### Next Week – Reminder

- Monday – Dancefit
- Wednesday – Eisteddfod Club
- Thursday – Rugby Club
- Elen's Class – pBuzz Session (28.1.25)
- Arthur and Gwenhyfar class-tour around the local area (29.1.25)
- F1 Workshop in Schools - Years 5 and 6 (31.1.25)



## Ysgol Glan Morfa

[www.ysgolglanmorfa.co.uk](http://www.ysgolglanmorfa.co.uk)

### Apiau Defnyddiol

Mae ein Dewiniaid Digidol wedi creu'r tabl isod i chi gyda'r apiau mwyaf defnyddiol o ran hybu sgiliau codio a sillafu ar draws yr Ysgol. Gallwch lawrlwytho rhain am ddim drwy eich stor ap neu google play. Mwynhewch!

### Useful Apps

Our Digital Wizards have gathered together a collection of useful apps for your child to use at home to improve their coding and spelling skills. You can download these apps from your app store or google play. Enjoy!

|  |   |  |  |
|--|---|--|--|
|  |   |                         |  |
| Ysgol Isaf /<br>Lower School   |  <p>Tric a Chlic</p> |  <p>Beebot</p>        |  |
| Ysgol Ganol /<br>Middle School   |  <p>Beebot</p>       |  <p>Campau Cosmig</p> |  |
| Ysgol Uchaf /<br>Upper School  |  <p>Scratch Jr.</p>  |  <p>Lightbot Hour</p> |  |



## Ysgol Glan Morfa

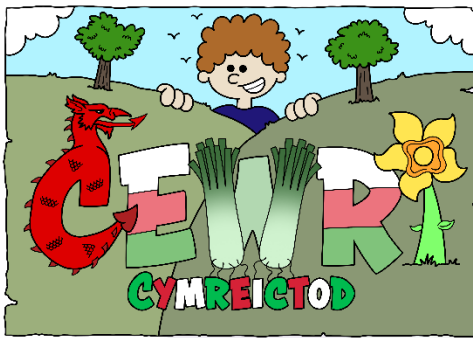
[www.ysgolglanmorfa.co.uk](http://www.ysgolglanmorfa.co.uk)

### Siarter yr Iaith Gymraeg

Pob wythnos fe fydd ein Cewri Cymreictod yn rhannu band ac ymadrodd yr wythnos gyda chi. Gofynnwn i chi wrando ar y band a defnyddio'r ymadrodd. Dwi'n siwr bydd yr ymadrodd yr wythnos hon yn cael ei defnyddio'r am!!

### Welsh Language Charter

Every week our Welsh Giants will be sharing with you a Band and Phrase of the week. We ask you to listen to the band and use the phrase. I'm sure this week's phrase will be used often!

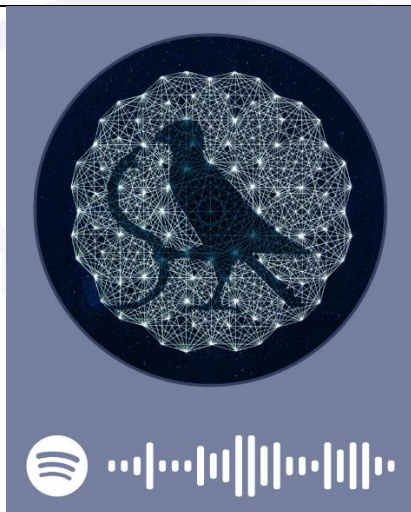


**Patrwm iaith yr Wythnos / Language Pattern**



**Band yr Wythnos / Band of the Week**

**Ymadrodd yr Wythnos / Phrase of the Week**



**Bwncath**

<https://www.youtube.com/watch?v=MzIzVXRHnWg>

### **Ymadrodd yr Wythnos** **Phrase of the Week**

**Oes gen ti dy.....**  
*(Do you have your....)*



**Clybiau Tymor y Gwanwyn – Cychwyn Wythnos Nesaf (W/C Ionawr 13eg)**

**Spring Term Clubs – Starting Next Week (W/C January 13<sup>th</sup>)**

| <u>Clwb / Club</u>  | <u>Blynyddoedd / Year Groups</u> | <u>Diwrnod/Day</u>                         | <u>Amser / Time</u>            |
|---|----------------------------------|--|--------------------------------|
| Dance Fit   | 3-6                              | Dydd Llun / Monday                         | 3:00 – 4:00                    |
| Chwaraeon yr Urdd / Urdd Multi Sports                               | 1-6                              | Amser Cinio Mercher / Wednesday Lunchtimes | 12:00 – 12:30 & 12:30 – 1:00pm |
| Clwb Eisteddfod (Perfformio) / Eisteddfod Club (Performing)         | 2-6                              | Dydd Mercher / Wednesday                   | 3:00 – 4:00.                   |
| Clwb Rygbi / Rugby Club (Cyffwrdd a Thaclo Llawn / Tag and Contact) | 3-6                              | Dydd Iau                                   | 3:00 – 4:00                    |

**Dyddiadau Pwysig / Important Dates**

| <u>Dyddiad / Date</u>            | <u>Beth</u>   | <u>What</u>  | <u>Amser/Time</u>    |
|----------------------------------|---|--|----------------------|
| <b>2025<br/>Ionawr / January</b> |   |  |                      |
| 28.1.25                          | Sesiwn pBuzz Dosbarth Elen                                | Elen Class pBuzz Session   | Prynhawn / Afternoon |
| 29.1.25                          | Dosbarth Arthur a Gwenhyfar-taith o amgylch yr ardal leol | Arthur and Gwenhyfar Classes (Year 1) – trip around the local area | Prynhawn / Afternoon |
| 31.1.25                          | Gweithdy Fformiwla 1 - Bl 5 a 6                           | Formula 1 Workshop - Years 5 & 6                                   | Prynhawn / Afternoon |



| Chwefror / February |   |   |                           |
|---------------------|---|---|---------------------------|
| 3.2.25              | Design to Smile – Fflwrid   | Design to Smile – Fluoride  | Bore / Morning            |
| 6.2.25              | Twrnamaint Pel-rhwyd yr Urdd Merched  | Urdd Netball Tournament Girls   | Trwy'r dydd / All day     |
| 6.2.25              | Gem gyfeillgar Pel-droed marchod v Baden Powell – Parc Sblot 3:15pm                 | Girls football Friendly Match v Baden Powell – Splott Park 3:15                   | 3:15                      |
| 7.2.25              | Dydd Miwsig Cymru   | Welsh Music Day   | Trwy'r dydd / All day     |
| 11.2.25             | Eisteddfod Ysgol – Dewis I'r Urdd   | School Eisteddfod – Urdd Selection  | Trwy'r Dydd / All day     |
| 17.2.25             | Bl 6 – Sound of Music Bro Edern (rhieni i fynd a nhw yna, Ysgol i drefnu bws yn ol) | Year 6 – Sound of Music @ Bro Edern (parents to take them there / bus to pick up) | 09:00                     |
| 17-21.2.25          | Wythnos Dathlu'r Dysgu  | Learning Celebration Week   | Trwy'r Wythnos / All Week |
| 20.2.25             | Plannu Coed – Coed Caerdydd   | Tree Planting – Cardiff Trees   | Bore / Morning            |
| 20.2.25             | Wythnos Dathlu Dysgu – Rhieni Bl 5 a 6 i ddod mewn i weld y gwaith.                 | Learning Celebration Week – Year 5 and 6 parents to come in and see their work.   | 1:30 – 2:30pm             |
| 20.2.25             | Gem Pel-rwyd v Baden Powell yng Nglan Morfa   | Netball Match v Baden Powell @ Glan Morfa   | 3:15 – 4:15               |
| 24-28.2.25          | Hanner Tymor  | Half Term   |                           |



| Mawrth / March |   |  |   |
|----------------|---|--|---|
| 3-7.3.25       | Wythnos Cymreictod  | Welsh Week   | Trwy'r Wythnos / All Week               |
| 4.3.25         | Cor yr Ysgol yn canu yn Iechyd Cyhoeddus Cymru                        | School Choir singing in Public Health Wales Offices            | Bore / Morning                          |
| 5.3.25         | F1 mewn Ysgolion – rownd derfynol rhanbarthol – Amgueddfa Sain Ffagan | F1 in schools – regional finals – St Fagans Museum             | Trwy'r dydd / All day                   |
| 7.3.25         | Lluniau Dosbarthiadau / Tîmoedd - Colorfoto                           | Colorfoto – Class Photographs / Teams                          | Trwy'r dydd / All day                   |
| 7.3.25         | Eisteddfod Hwyl   | Fun Eisteddfod   | Bore / Morning                          |
| 10 & 11.3.25   | Noson Rieni   | Parents Evening  | 15:00 – 18:00                           |
| 17-19.3.25     | Blwyddyn 4 yn Naturesbase   | Year 4 in Naturesbase  | Trwy'r dydd / All day                   |
| 22.3.25        | Eisteddfod Cylch yr Urdd – Bro Edern                                  | Urdd Local Eisteddfod – Bro Edern                              | 08:00 – 15:00<br>Dydd Sadwrn / Saturday |
| 24.3.25        | Blwyddyn 6 yn Creu E-Bortffolio ar gyfer Ysgol Bro Edern              | Year 6 creating E-Portfolio in preparation for Ysgol Bro Edern | Prynhawn / Afternoon                    |
| Ebrill / April |   |  |   |
| 1.4.25         | Eisteddfod "Theatr"   | Theatre Eisteddfod   | 17:00 – 20:00                           |
| 5.4.25         | Eisteddfod Sir yr Urdd  | Urdd County Eisteddfod   | 08:00 – 15:00<br>Dydd Sadwrn / Saturday |
| 7.4.25         | Rygbi Taclo yr Urdd – Caeau Pontcanna                                 | Urdd Rugby Full Contact Tournament – Pontcanna Fields          | Trwy'r dydd / All day                   |
| 7-11.4.25      | Wythnos Aml Ddiwylliannol   | Multi Cultural Week  | Trwy'r wythnos / All week               |
| 10.4.25        | Rygbi TAG Blynyddoedd 3 & 4 – Caeau Pontcanna                         | Urdd TAG Rugby Competition – Pontcanna Fields                  | Trwy'r dydd / All day                   |
| 14-25.4.25     | Gwyliau'r Pasg  | Easter Holidays  |   |

Bydd mwy o ddyddiadau yn cael eu ychwanegu yn ystod y tymor.  
More dates will be added during the term.



## Ysgol Glan Morfa

www.ysgolglanmorfa.co.uk

### Yn y Gymuned / In the Community

## Railway Gardens in January and February

### January

- Thursday 9th:** Death Cafe\* (6:15pm)
- Saturday 11th:** Volunteer Induction (10:30am)
- Saturday 18th:** Gardening Club (10:30am - 1:30pm)
- Saturday 18th:** Meet and Mend session\* (12 - 2pm)
- Friday 24th:** Urban Long Forest community consultation + lunch (10am - 1pm)
- Saturday 25th:** Shared lunch and apple tree Wassail! (11-2pm)

### February

- Thursday 6th:** Death Cafe\* (6:15 pm)
- Saturday 8th:** Introduction to heat pumps for your home (10:30am - 12pm)
- Saturday 8th:** Introduction to solar for your home (1pm - 2:30pm)
- Friday 14th:** Friendly Friday: Cook and share lunch together (11am - 2pm)
- Saturday 15th:** The Big Splott Seed Swap! (11am - 2pm)
- Saturday 15th:** Terrarium making workshop\* (3 - 5pm)
- Tuesday 18th:** Back Garden Chicken Keeping for Beginners (6 - 8:30pm)
- Saturday 22nd:** Climate Cafe (10:30am - 12pm)
- Thursday 27th:** Fiery Jack's train station: Family Play! (11am - 1pm)

#### Please note!

#### Some of our activities are pausing in the new year

- Seal and Bear will reopen from January 25th
- Railway Writers will be back from February 25th
- Forces of Nature will be back on March 5th



### For more info and booking...

Please visit  
[railwaygardens.co.uk](http://railwaygardens.co.uk)  
Or call  
**07704 605197**

Many events are free but some require booking. More events are always being added so do check the online programme if possible!

*Events with a \* are run by community members, volunteers & partners and you can find any booking details on our programme web page or by calling us.*

## Stay in touch

If you have any questions or comments, or would like to volunteer, please get in touch.

### Email

[julia@greensquirrel.co.uk](mailto:julia@greensquirrel.co.uk)

### Call/ text

07704 605197

### Online

Blog: [railwaygardens.co.uk](http://railwaygardens.co.uk)  
Twitter: @railwaygardens

## Regular free activities

### Tuesdays, from 7/1

- 10am, alternate Tuesdays, People in Pain\*
- 12:30pm, Stay & Play + Toy Library\*
- 12:30pm: Welsh learners practice & chat group\*
- 2pm, Good Shed (part of the Mens Sheds movement)\*

### Wednesdays, from 8/1

- 1pm, Wellbeing Cafe

### Fridays, from 9/1

- 10:30am - 12:30pm, drop in volunteering session



**Bentyg, the library of things is open: 10am - 2pm**  
on Wednesdays, Thursday, Saturdays



Scan here for the site location or visit <http://bit.ly/rg-map>



Railway Gardens is supported by







Ysgol Glan Morfa

www.ysgolglanmorfa.co.uk

**FREE**

**nofitstate**  
**community**

## Community Space

A community creative space for people from Tremorfa, Adamsdown, Splott, refugees/asylum seekers, people in supported housing and from the traveller communities.



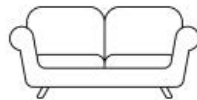
**Where**

**NoFit State Community Circus, Four Elms Road, CF24 1LE**

**Every Tuesday from 21 January**

**New times: 12:00 - 17:30 | All drop-in**

- 12:00 - 13:00** Free Lunch
- 12:00 - 17:00** Studio space open with hosts & volunteers, families + individuals welcome
- 13:00 - 15:00** Celf Cymraeg - Welsh speaking art project for young adults, (18 - 30)+ welcomes local neuro diverse + LGBTQ+ community
- 15:30 - 17:30** Children's art session with Angharad + supported by Playworkers Seren in the Community (8+)
- 16:30 - 17:30** Family circus



Ysgol Glan Morfa  
Ffordd Lewis, Sblot, Caerdydd, CF24 5EB  
Lewis Road, Splott, Cardiff, CF24 5EB  
Ffôn/Tel: 02920 483663



Ysgol Glan Morfa

www.ysgolglanmorfa.co.uk

Pennaeth/Headteacher:  
Meilir Tomos CPCP/NPQH  
Dirprwy/Deputy:  
Miss Bethan Jenkins



Chwaraeon

# Clwb Pêl-Droed Huddle Springwood Huddle Football Club B1:3 - B1:6

£17.50

am 5 wythnos  
for 5 weeks



CLWB CHWARAEON YR URDD

urdd.cymru/ymuno  
Rhaid ymaelodi gyda'r Urdd i fynychu  
Must be an Urdd member to attend  
Aelodaeth £1 ar gael i'r rheiny sy'n derbyn cefnogaeth ariannol  
£1 membership for those receiving income support

## DYDDIAD | DATE

Dydd Iau / Thursday  
Yn Wythnosol / Weekly

Dyddiad Cychwyn - 23/01/25  
Start Date -

## AMSER TIME

17:15 - 18:00

## LOCATION | LLEOLIAD

Ysgol Gynradd  
Springwood

**RHAID COFRESTRU AR-LEIN  
MUST REGISTER ONLINE**



gweithgareddau.urdd.cymru

**EICH SWYDDOG LLEOL  
YOUR LOCAL OFFICER**



Morgan Lewis  
morganlewis@urdd.org  
07866911463



@urddcaerdyddfro



@urdd caerdydd a'r fro



@chwaraeonurddcaf

sportwales  
chwaraeoncymru

urdd.cymru/chwaraeon

Merched yn unig / This is for girls only

Gyda'n Gilydd Fe Lwyddwn | Together We Will Succeed

@ysgolglanmorfa

Ysgol Glan Morfa  
Ffordd Lewis, Sblot, Caerdydd, CF24 5EB  
Lewis Road, Splott, Cardiff, CF24 5EB  
Ffôn/Tel: 02920 483663



Pennaeth/Headteacher:  
Meilir Tomos CPCP/NPQH  
Dirprwy/Deputy:  
Miss Bethan Jenkins

Ysgol Glan Morfa

[www.ysgolglanmorfa.co.uk](http://www.ysgolglanmorfa.co.uk)



Independent  
Living Services

boomerang *Cardiff*



The  
FAN Charity

Volunteer  
Cardiff



# WARM SPACE Event



## STAR HUB

 Muirton Road, Tremorfa CF24



24 January  
2025



15:00 – 17:00

Health and Wellbeing advice | Fun activities for all |  
Children entertainment | Face Painting |  
Magician | And more..!

**Refreshments will be provided**

*Come along!*

Ysgol Glan Morfa  
Ffordd Lewis, Sblot, Caerdydd, CF24 5EB  
Lewis Road, Splott, Cardiff, CF24 5EB  
Ffôn/Tel: 02920 483663



Ysgol Glan Morfa

www.ysgolglanmorfa.co.uk

Pennaeth/Headteacher:  
Meilir Tomos CPCP/NPQH  
Dirprwy/Deputy:  
Miss Bethan Jenkins



Chwaraeon

# Clwb Pêl-droed Channel View Channel View Football Club

Bl. 1-2 / Yr. 1 - 2



CLWB CHWARAEON YR URDD

**DYDDIAD | DATE**

Dydd Lau / Thursday

16/01/2025

**AMSER  
TIME**

17:00-18:00

**LOCATION | LLEOLIAD**



Canolfan Hamden Channel view  
Channel View leisure centre

**RHAID COFRESTRU AR-LEIN  
MUST REGISTER ONLINE**



[gweithgareddau.urdd.cymru](http://gweithgareddau.urdd.cymru)

**EICH SWYDDOG LLEOL  
YOUR LOCAL OFFICER**



Yusuf Bille  
Yusufbille@urdd.org  
07929717014



@urdd



@urdd



@urdd

sportwales  
chwaraeon.cymru

[urdd.cymru/chwaraeon](http://urdd.cymru/chwaraeon)



**DRAMA MAWR Y DRE!**  
Ar gyfer plant Bl.3-6 | For children in Yrs.3-6

11.1.25 | 11:30-12:30 | £42 am 6 Wythnos  
📍 Festri Salem, Treganna, CF5 1QE

**£42**

Dewch i ymuno â Fflur a Kim mewn sesiynau drama ar foreau Sadwrn!  
Perfformio, sgriptio, neu gefn llwyfan, dyma'r clwb i ti!

Come and join Fflur and Kim for a drama club on Saturday mornings!  
Performing, scripting or behind the scenes, this is the club for you!

Cofrestru / Register:  
[www.mentercaerdydd.cymru](http://www.mentercaerdydd.cymru)

Gwybodaeth / Information:  
[mari@mentercaerdydd.cymru](mailto:mari@mentercaerdydd.cymru)



 Menter Caerdydd - Rhif Elusen: 1098606. Rhif Cwmni: 4576565

**DAWNS A DRAMA BACH Y DRE!**  
Ar gyfer plant Derbyn - Bl.2  
For children in Reception - Yr.2

11.1.25 | 10:30-11:20 | £36 am 6 Wythnos  
📍 Festri Salem, Treganna, CF5 1QE

**£36**

Dewch i ymuno â Fflur a Kim mewn sesiynau hwyliog dawns a drama ar foreau Sadwrn!  
Sesiynau llawn hwyl i fagu hyder corfforol a llafar!

Come and join Fflur and Kim for a dance and drama club on Saturday mornings!  
Fun sessions to boost language and physical skills!

Cofrestru / Register:  
[www.mentercaerdydd.cymru](http://www.mentercaerdydd.cymru)

Gwybodaeth / Information:  
[mari@mentercaerdydd.cymru](mailto:mari@mentercaerdydd.cymru)



 Menter Caerdydd - Rhif Elusen: 1098606. Rhif Cwmni: 4576565

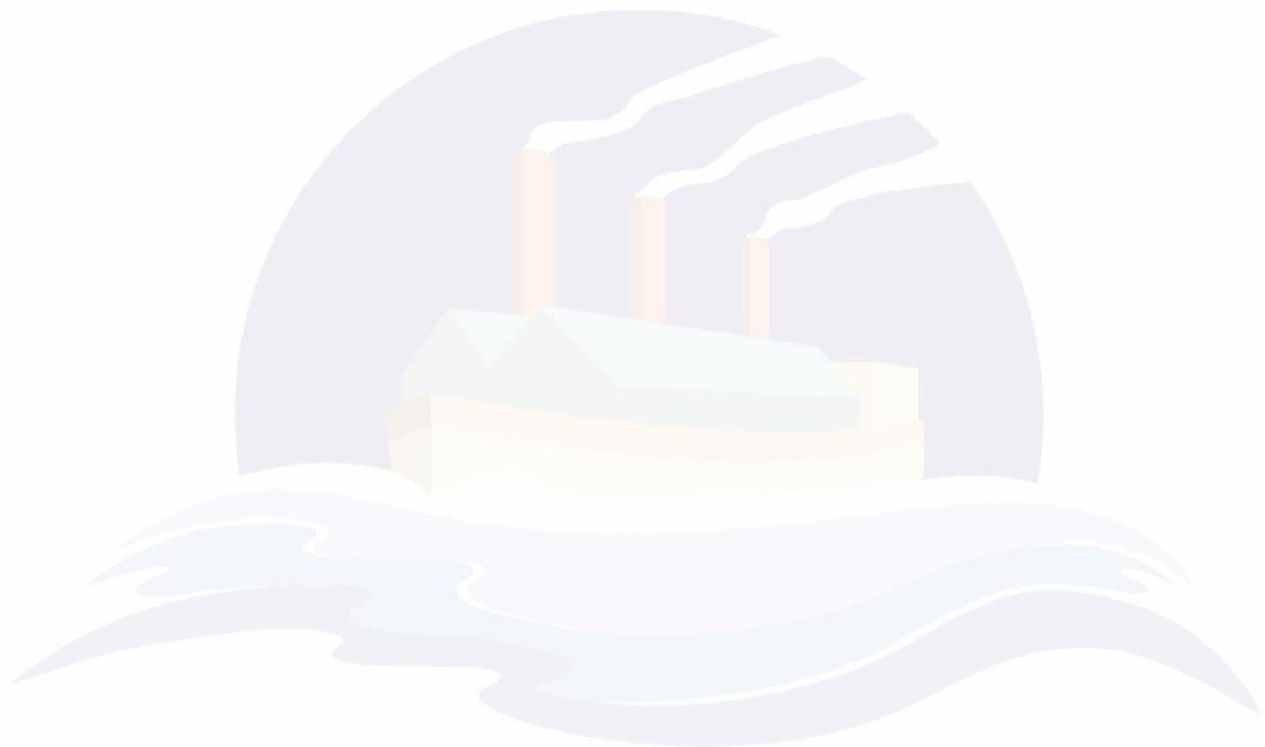
**Ysgol Glan Morfa**  
Ffordd Lewis, Sblot, Caerdydd, CF24 5EB  
Lewis Road, Splott, Cardiff, CF24 5EB  
Ffôn/Tel: 02920 483663



**Pennaeth/Headteacher:**  
Meilir Tomos CPCP/NPQH  
**Dirprwy/Deputy:**  
Miss Bethan Jenkins

**Ysgol Glan Morfa**

[www.ysgolglanmorfa.co.uk](http://www.ysgolglanmorfa.co.uk)



Ysgol Glan Morfa